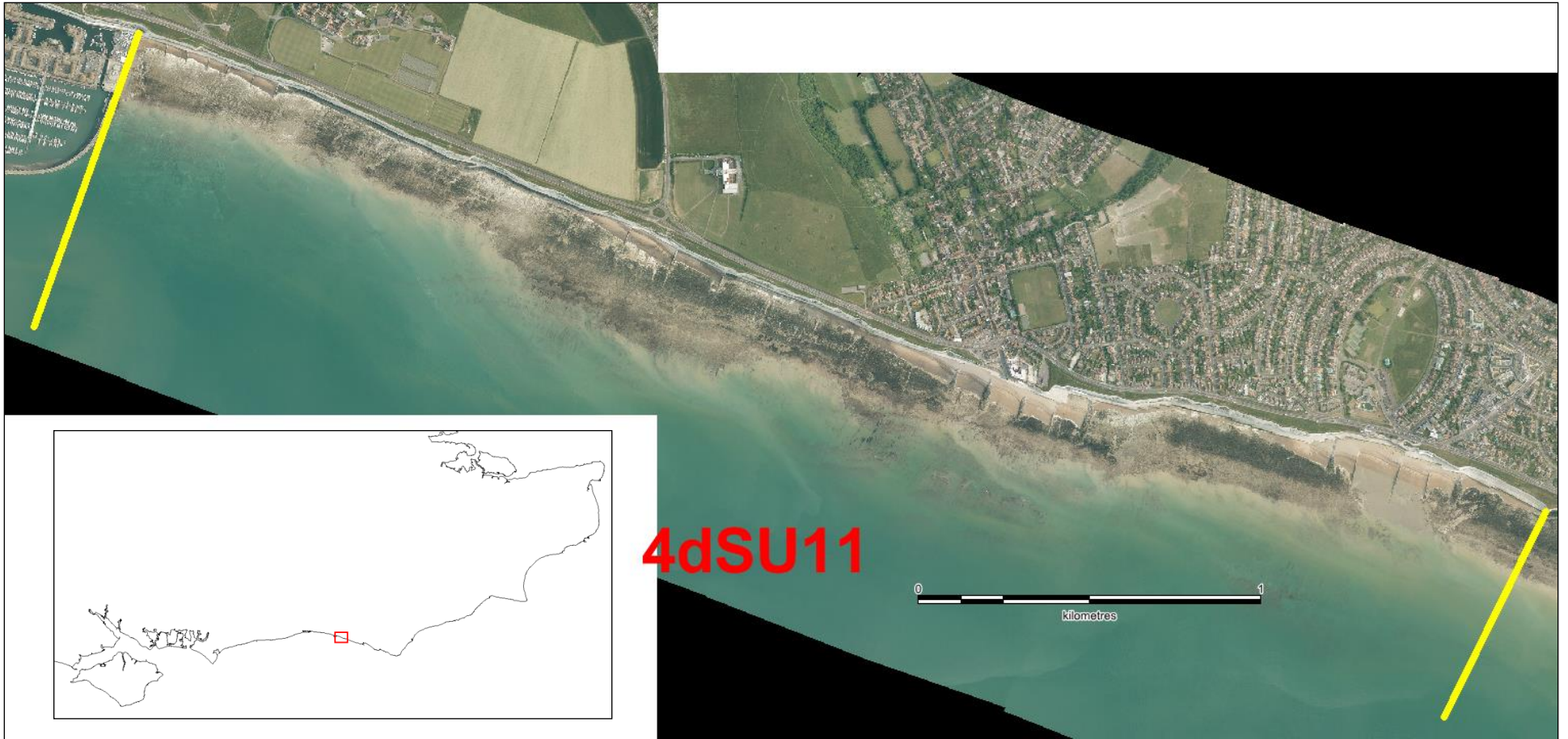


SMP Policy Unit: 4d-MU12
Survey Unit: 4dSU11

Brighton Marina (Eastern Arm) to Saltdean

Topographic Beach Profiles 4d00331 – 4d00418



Summary

The Brighton Marina to Saltdean frontage is a southwest facing chalk cliff stretch, backed by farmland in the western half and residential properties in the east. The undercliff has a seawall and promenade along the length of the frontage, with retaining structures varying between rock groynes and concrete wall groynes. The width of the shingle bank varies considerably, narrowing to a strip of no more than 3m in the west, where a rock toe revetment fronts the sea wall.

The presence of the Marina to the west has an inevitable impact on the natural eastwards material drift in the region, accounting for the variety in berm width along this stretch. The underlying chalk bedrock is exposed as an extensive shore platform at low tide.

Survey Regime

Survey type	Frequency	Survey extent
<i>Topographic baseline</i>	5 years	MLWN
<i>Topographic interim profile</i>	Annual	MLWN
<i>Topographic post-storm</i>	As Required	MLWN
<i>Bathymetry</i>	5 years	1km offshore
<i>Ortho-photography</i>	3 years	MLWS
<i>Lidar</i>	2 Years	MLWN
<i>Habitat Mapping</i>	5 Years	As Required

Full details of data availability and extents can be found on the Channel Coast Observatory Website (www.channelcoast.org)