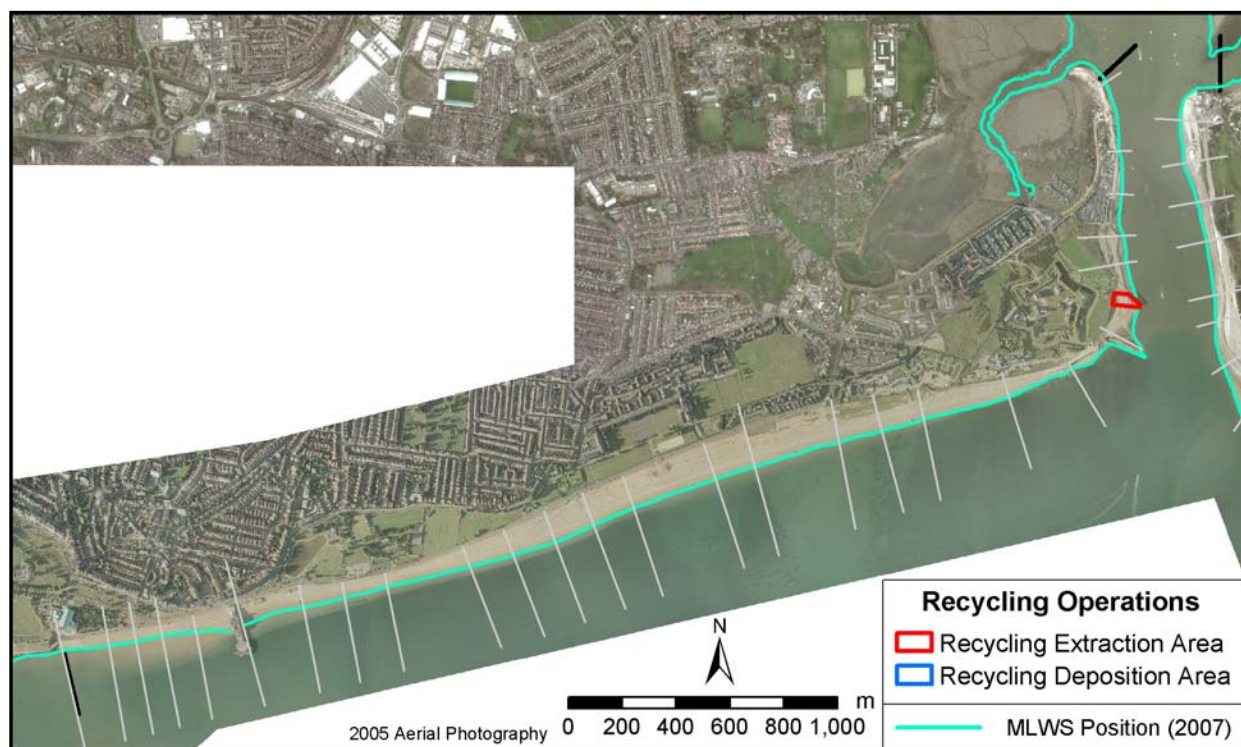


## Policy Unit: 5a CPU8

### Langstone Harbour Entrance to Southsea Castle

Topographic Beach Profiles 5a00513 – 5a00562



#### Summary

This unit spans approximately 4km of open coast before recurving into a 1km strip along the spit that defines Langstone Harbour inlet. The shingle beach widens progressively from Southsea Pier towards Eastney where it reaches approximately 150m at its widest point. East of the drift divide at Eastney, the beach begins to narrow and recurve into the harbour inlet. The whole unit is backed by a range of defence structures, including masonry revetments, concrete sea walls and clay embankments.

#### Survey regime

Survey type	Frequency	Profile spacing/survey extent
<i>Topographic baseline</i>	5 years	50m to MLWS
<i>Topographic interim profile</i>	Spring & Autumn	100 - 200m to MLWS
<i>Bathymetry</i>	5 years	50m profiles, MLWN to 1km offshore
<i>Ortho-photography</i>	5 years	MLWN
<i>Non-rectified aerial photography</i>	Annual	MLWN
<i>Lidar</i>	5 years	MLWN
<i>Habitat mapping</i>	5 Years	Extent of aerial photography

#### Summary of beach operations

In October 2006, there was a small shingle extraction which was recycled to a small section of beach within CPU8.

Date	Operation	Quantity (m <sup>3</sup> )	Location/Notes
<b>2006</b>			
06/10/2006	Localised shingle extraction	3,500	Extracted from between profiles 5a00429 and 5a00431