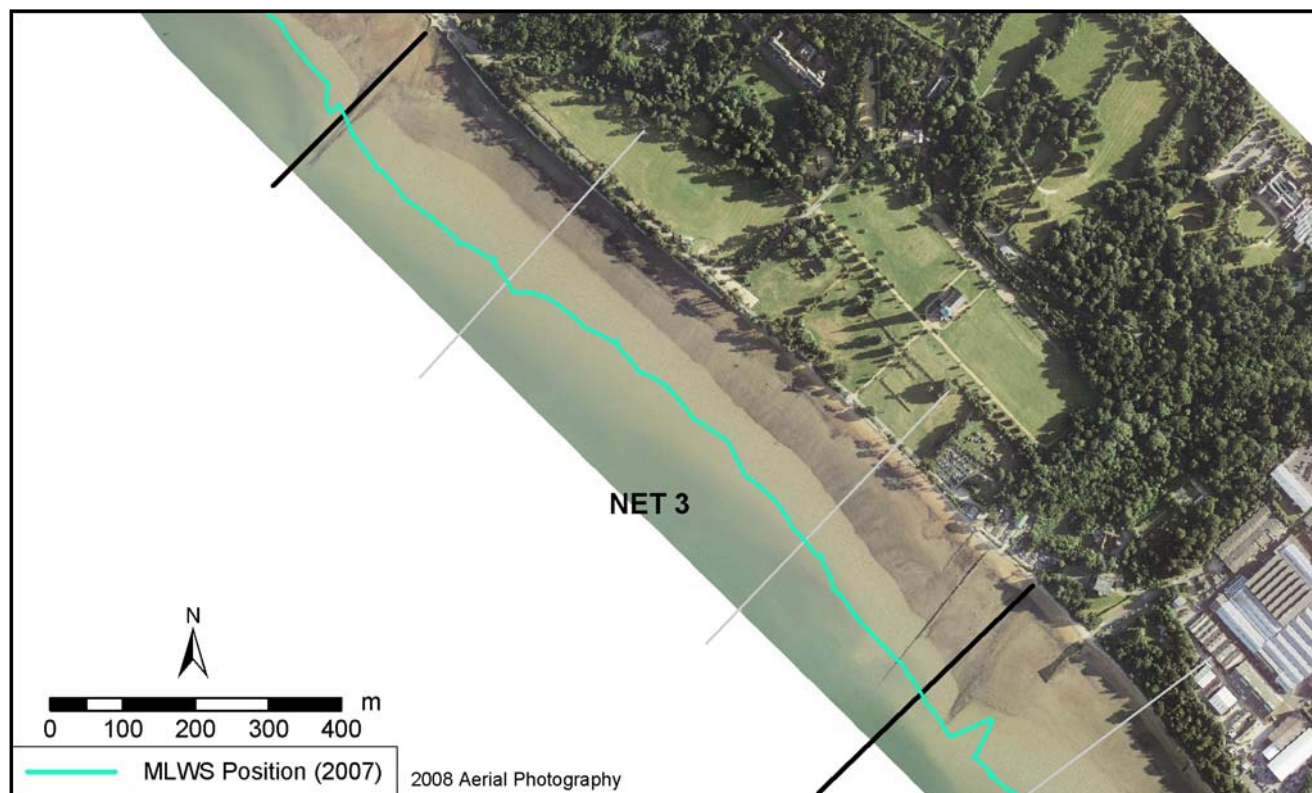


Policy Unit: 5c NET3

Netley Hard to Cliff House

Topographic Beach Profiles 5c00060 – 5c00082



Summary

Along the majority of the shore, there is a narrow shingle beach and a 100m wide muddy foreshore. The unit is fronted by a seawall but there is little or no shingle beach in front of the seawall at the western end.

Survey Regime

Survey type	Frequency	Profile spacing/survey extent
<i>Topographic baseline</i>	5 years	50m to MLWS
<i>Topographic interim profile</i>	Spring	500m to MLWS
<i>Bathymetry</i>	5 years	50m profiles, MLWN to 1km offshore
<i>Ortho-photography</i>	5 years	MLWN
<i>Non-rectified aerial photography</i>	Annual	MLWN
<i>Lidar</i>	5 Years	MLWN
<i>Habitat mapping</i>	5 Years	Extent of aerial photography