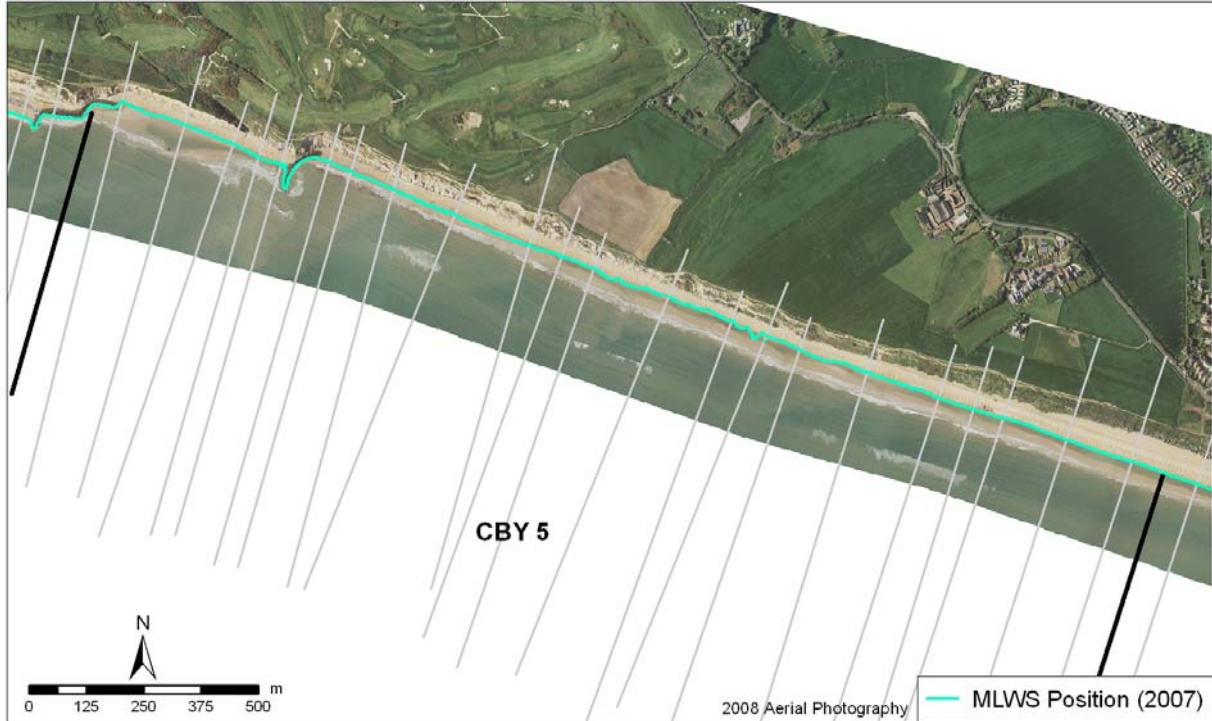


Policy Unit: 5f CBY5

Becton to Hordle Cliff

Topographic Beach Profiles: 5f00162 to 5f00113



Summary

This policy unit is backed by steep eroding sand and mud cliffs which gradually decrease in height and become more vegetated towards the eastern end of the unit. The cliffs are intersected by the Walkford Brook at Becton Bunny and comprise soft and highly erodible Tertiary material. The upper beach in front of the cliffs consists largely of coarse shingle, whilst the lower beach is a mix of sand and shingle. The shoreline along this unit is entirely undefended and vulnerable to erosion, particularly the soft cliffs at the western end. Sediment transport is generally from west to east, although the influx of sediment from the west is limited by the rock armour defences which protect Barton-on-Sea. The highest erosion is predicted to occur to the southern edge of Barton golf course at the very western end of the unit where the beach is minimal. Further to the east, the shingle beach becomes wider and the cliffs are vegetated and relatively stable.

There are currently no recycling operations or beach maintenance works.

Survey Regime

| Survey type | Frequency | Profile spacing/survey extent |
|---|------------------|-------------------------------|
| <i>Topographic baseline</i> | 5 years | 10-80m to MLWS |
| <i>Topographic interim profile</i> | Spring | 50-175m to MLWS |
| <i>Bathymetry</i> | Annual | 50m profiles to 1km offshore |
| <i>Ortho-photography</i> | 5 years | MLWN |
| <i>Non-rectified aerial photography</i> | Annual | MLWN |
| <i>Lidar</i> | Years 1, 2, 3, 5 | MLWN |
| <i>Habitat mapping</i> | 5 Years | Extent of ortho-photography |